

**CRUDE WASH** is a heavy duty solvent degreaser. It is ideal for use in applications where water based chemistries are ineffective. This formulation contains a blend of high grade solvents, penetrating agents, and wetting agents. Use **CRUDE WASH** to remove the most stubborn contaminants, including: heavy base petroleum crude oil, fuel, grease, oil base coatings, tar, cosmoline, carbon, and asphalts.

## DIRECTIONS

**CRUDE WASH** is simple and easy to use. It is formulated for direct application and removal from the surface. The user only needs to apply the product to the surface (spray on, wipe on, or brush on) and allow it to soak into the soil. The solvent action of the formulation will liquefy and lift the crude oil from the surface, allowing for easy removal.

## SOAKING APPLICATION

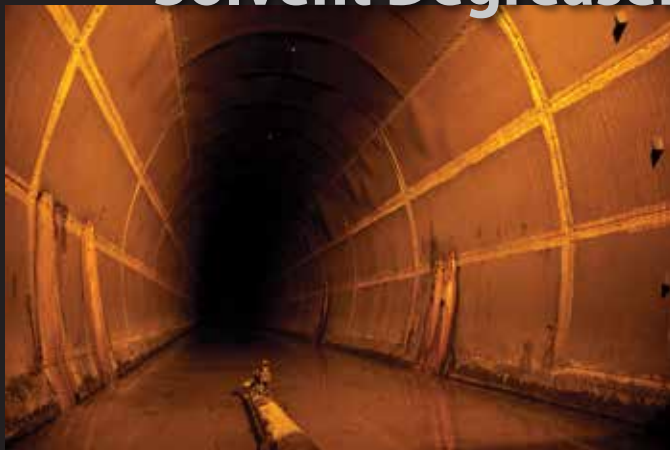
Allow product to soak for thirty (30) minutes or longer depending on contamination, agitate with brush if needed, and flush with water. May be used on any surface not harmed by petroleum distillates.



Engineered Chemistries  
SUPERIOR SOLUTIONS

# CRUDE WASH™

## Solvent Degreaser



## Fast Solvent Action

### DANGER

**KEEP OUT OF REACH OF CHILDREN.  
FOR INDUSTRIAL AND INSTITUTIONAL USE ONLY.**

SEE RIGHT PANEL FOR ADDITIONAL CAUTIONS.

NET CONTENTS: U.S. GALLONS

8/16



### DANGER: Combustible Liquid

May be harmful if swallowed and enters airways. Causes skin irritation. Causes eye irritation. May cause respiratory irritation. May cause cancer. Avoid breathing dust/fume/gas/mist/vapors/spray. Use only outdoors or in a well-ventilated area. Use personal protective equipment as required.

**IF SWALLOWED:** Do NOT induce vomiting. Seek immediate medical attention.

**IF ON SKIN (or hair):** Remove/Take off immediately all contaminated clothing. Rinse skin with water/.shower.

**IF INHALED:** Remove victim to fresh air and keep at rest in a position comfortable for breathing.

**IF IN EYES:** Rinse continuously with water for several minutes. Remove contact lenses if present and easy to do. Continue rinsing.

WECHEM, INC.

5734 Susitna Dr. Harahan, LA 70123

504.733.1152 1.800.426.0512

FAX 504.733.2218 [www.wechem.com](http://www.wechem.com)



NFPA



HAZARD RATING

4 - EXTREME  
3 - HIGH  
2 - MODERATE  
1 - SLIGHT

