

USE TO PREVENT RUST, REMOVE RUST SCALE AND BUILDUP, AND FOR DECORATIVE PURPOSES WHERE SOME RUST IS WANTED.

DE-RUST IS A UNIQUE RUST TREATMENT. FOLLOW INSTRUCTIONS CAREFULLY TO OBTAIN BEST RESULTS.

No V.O.C.s, No H.A.P.s

DIRECTIONS

Surface Preparation:

- IMPORTANT:** Remove all oil, grease, salt or water-soluble chemicals with high strength cleaner. Rinse thoroughly with water.
- Remove blistered and loose paint, loose rust scale and heavy rust buildup.

Applying D-RUST:

- Mix **D-RUST** thoroughly before using.
- Pour the estimated amount needed for the job into a clean container. (**NOTE: D-RUST CAN NOT BE RETURNED TO ORIGINAL CONTAINER AFTER USE.**)
- Use of rubber gloves is recommended because **D-RUST** is difficult to remove from the skin.
- For maximum penetration, work **D-RUST** into the rusted surface with a synthetic bristle brush. On large areas use a roller or spray (airless spray is preferred).

NOTE: TREAT ONLY ENOUGH SURFACE AREA SO THAT THE SECOND COAT CAN BE APPLIED IN 20-30 MINUTES.

- Apply second coating within 20-30 minutes in a cross direction to previous coat. Allow to dry 24 hours. **D-RUST** dries to a black matte finish.

Clean-up:

- Clean up equipment immediately after use with cold water and dish soap. **D-RUST** is extremely difficult to remove when it is dry.

ENVIRONMENTAL CONDITIONS

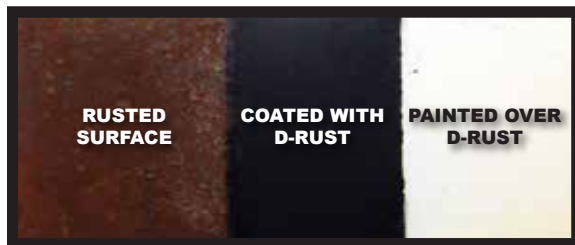
The temperatures of the air and the surface being treated should be between 50°F and 90°F. Do not apply in high wind conditions or in direct sunlight. Apply to dry or damp (not wet) surfaces only.



Engineered Chemistries
SUPERIOR SOLUTIONS

D-RUST

ONE-STEP RUST NEUTRALIZER & METAL PRIMER



**WARNING: IRRITANT
KEEP OUT OF REACH OF CHILDREN.
FOR INDUSTRIAL AND INSTITUTIONAL
USE ONLY.**

(SEE RIGHT PANEL FOR ADDITIONAL CAUTIONS AND FIRST AID STATEMENTS.)

NET WEIGHT: U.S. GALLON

PRODUCT NOTES: PROTECT FROM FREEZING

- D-RUST** dries to a durable black matte finish when applied to rusted surfaces and remains clear when applied over non-rusted metals or other coatings.
- For decorative effects or maximum protection in highly corrosive environments, a suitable topcoat for the environment is recommended.
- Not recommended for applications requiring total submersion in any liquids.



WARNING: May be harmful if swallowed. Causes skin irritation. Causes eye irritation. May cause respiratory irritation. Read label before use. Do not breathe dust/fume/ gas/mist/vapors/spray. Do not get in eyes, on skin or on clothing. Wear protective gloves/protective clothing/eye protection/face protection.

IF SWALLOWED: Do not induce vomiting. Drink one or two glasses of water. Seek medical advice/attention if any irritation develops or persists.

IF ON SKIN: Wash with soap and water. Seek medical attention if irritation develops or persists.

IF INHALED: Remove victim to fresh air and keep at rest in a position comfortable for breathing.

IF IN EYES: Flush eyes and under eyelids with plenty of cool water for at least 15 minutes. If irritated, seek medical attention.

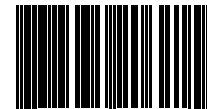
Contains: Tannic Acid (1401-55-4)

READ SAFETY DATA SHEET BEFORE USE.

Proper Shipping Name: Paint Related Material

WEICHEM, INC.
5734 Susitna Dr
Harahan, LA 70123
(504) 733-1152
800-426-0512
FAX (504) 733-2218
WWW.WEICHEM.COM

SCAN FOR SDS



7 38435 20621 5