

NA1760, Compounds, Cleaning Liquid, (Phosphoric Acid), 8. PGIII
PROPER SHIPPING NAME:

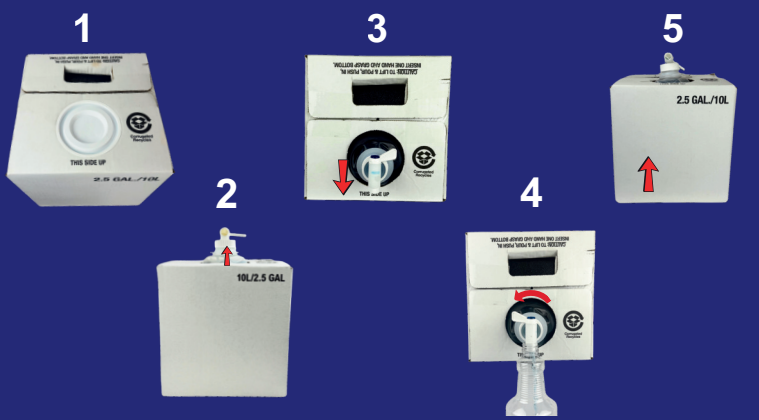


TUB/TILE/SHOWER CLEANER

4X
CONCENTRATE
MAKES 40
QUARTS

DIRECTIONS

1. Turn box upright and remove white cap.
2. Pull bottle neck up.
3. Turn box to proper dispensing direction.
4. Open dispensing spigot to left and fill reusable bottle to concentrate fill line.
5. Close dispensing spigot and turn box upright to avoid leaking.
6. Fill reusable bottle with water to the bottom of the rib of the neck of bottle.



WARNING

May be harmful if swallowed. Causes skin irritation. Causes eye irritation. May cause respiratory irritation. READ SAFETY DATA SHEET BEFORE USE.

If Swallowed: Rinse mouth. Do NOT induce vomiting. **If On Skin (or hair):** Remove/Take off immediately all contaminated clothing. Rinse skin with water/shower. **If In Eyes:** Rinse continuously with water for several minutes. Remove contact lenses if present and easy to do. Continue rinsing. **If Inhaled:** Remove victim to fresh air and keep at rest in a position comfortable for breathing. If Exposed or you feel unwell: Call a poison center or doctor/physician.

SCAN FOR SDS



Engineered Chemistries
SUPERIOR SOLUTIONS

5734 Susitna Dr. | Harahan, LA 70123
(504) 733-1152 | FAX (504) 733-2218
www.wechem.com

Rev. 03.2026

